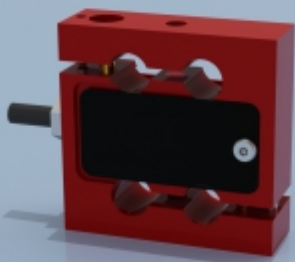




TYPE: STA-7



STA-7 Aluminium Alloy S Type Low Range Tension/Compression Load Cell

Description

The STA-7 load cell series is ideal for measuring both tensile and compressive forces. The standard metric threads at each end of the load cell are designed to accept standard spherical seating rod-end bearings.

The STA-7 is suitable for many applications where a tension and compression load cell is required for high accuracy measurements, including material test machines, weighing and general force measurement. Tension and compression overload stops are supplied as standard on all ranges up to 5kg. This feature helps to protect the load cell against accidental damage up to 500% of the load cell range.

The STA-7 series can be supplied on its own or combined with our extensive range of instrumentation to provide a complete load monitoring system.

Features

- Ranges: 1, 2, 5, 10, 25, 50kg
- High accuracy
- Aluminium alloy
- Weighs only 300g
- Integral overload stops on 1, 2 & 5kg versions

Specification

Rated load (kg/tonne)	1, 2, 5, 10, 25, 50
Nominal sensitivity	2mV/V at rated load
Sensitivity tolerance	<±0.1%
Temperature effect on zero	±0.0025% per °C
Temperature effect on sensitivity	±0.0021% per °C
Linearity	<±0.03% of rated load
Hysteresis	<±0.03% of rated load
Repeatability	<±0.01% of rated load
Input resistance	440Ω ±20Ω
Output resistance	350Ω ±2Ω
Insulation resistance	>5GΩ @50VDC
Zero balance	±1% of rated load
Recommended supply voltage	10V (1-15V nominal, 18V maximum)
Service load	120%
Maximum permissible load	150%
Breaking load	>300%
Maximum transverse load	50%
Maximum permissible dynamic load	50%
Displacement at nominal load	~0.3mm
Temperature nominal range	-10 to +40°C
Service temperature	-20 to +70°C
Storage temperature	-20 to +80°C
Natural frequency	1kg 2kg 5kg 10kg 25kg 50kg 220Hz 500Hz 750Hz 1kHz 1.5kHz 2kHz
Environmental protection level	IP20
Connection type	3 metres PVC screened cable, via gland cable
Wiring connections	+supply: Red -supply: Black +signal: White -signal: Yellow

Typical Applications

- Hanging scales
- Material test machines
- Engine/motor dynamometers
- Process weighing
- General force measurement

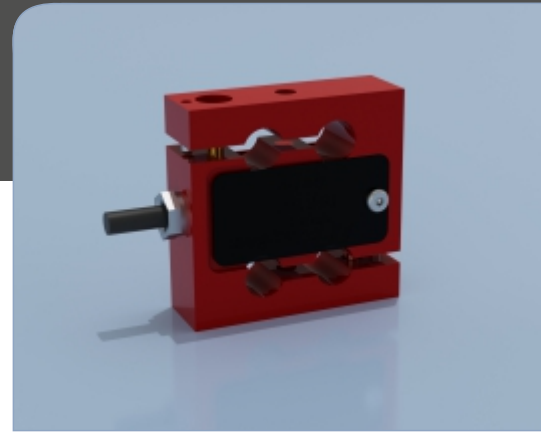
Available Options

- Spherical seating rod end bearings
- Compression load button
- TEDS option (when used with TR150 handheld display)

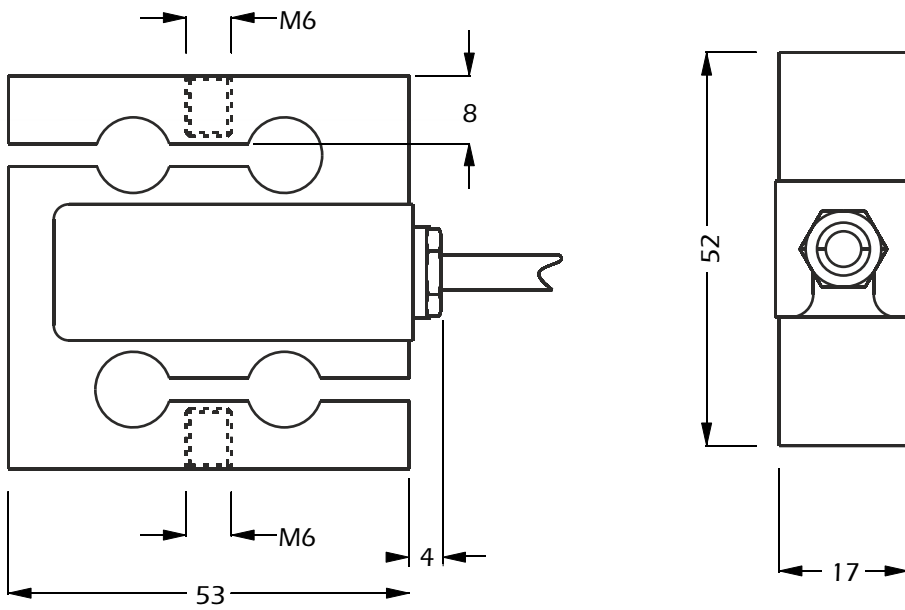
AVAILABLE TO BUY ONLINE

Visit our website www.lcmssystems.com
(In-stock items usually ship within 48 hours)

STA-7 Aluminium Alloy S Type Low Range Tension/Compression Load Cell



Dimensions



All dimensions are in mm

Rating (kgs)	Part Number	Weight (g)	Resolution (kgs)
1	STA-7-1	300	0.0002
2	STA-7-2	300	0.0002
5	STA-7-5	300	0.001
10	STA-7-10	300	0.002
25	STA-7-25	300	0.005
50	STA-7-50	300	0.01

Note: default calibration of these load cells will be in tension. If you require calibration in compression or both tension & compression, please state at time of order (additional charges will apply).

When paired with instrumentation, accuracy figures may become subject to system inaccuracies. Please refer to calibration certificate for actual performance.

www.lcmsystems.com

LCM Systems Ltd

Unit 15, Newport Business Park, Barry Way
Newport, Isle of Wight PO30 5GY UK

Tel: +44 (0)1983 249264

sales@lcmsystems.com

www.lcmsystems.com

Due to continual product development, LCM Systems Ltd reserves the right to alter product specifications without prior notice.

Issue No. 3

Issue date: 03/02/2021

APPROVED

(unapproved if printed)